

Baby Keep FL Corner Mounting Kit Installation Manual

For Corner Installation Use

To be used with: Baby Keep Slim FL Model BK-F62
Baby Keep Fit FL Model BK-F72

In order to safely install the Baby Keep FL type, please make sure to read this manual and follow the instructions accordingly. This guide explains how to install Baby Keep Fit FL or Baby Keep Slim FL at corner. To install the Baby Keep WA type to a plain wall, please refer to the Installation Manual supplied with the Baby Keep WA type.

Safety Warnings

Safety precautions noted here are divided into "warnings" and "cautions" according to the urgency and seriousness of the harm and damage that may occur. Please read this instruction manual carefully before use, and observe the safety precautions.

| | |
|-------------------|---|
| ⚠ WARNINGS | If this label is ignored or mishandled, there is risk of serious injury or death. |
| ⚠ CAUTIONS | If this label is ignored or mishandled, there is risk of injury or property damage. |

| | |
|---|--|
| ⚠ WARNINGS | |
| <ul style="list-style-type: none"> Fix the Baby Keep to both the floor and the wall. The Baby Keep may collapse if attached only to a floor. Select the anchor bolts that can be firmly secured into concrete, to a depth of at least 40mm. This product may fall if the anchor bolts are connected to a mortar surface. <p>How to Mount onto a Floor</p> <div style="display: flex; justify-content: space-around;"> <div style="text-align: center;"> <p>Incorrect</p> </div> <div style="text-align: center;"> <p>Correct</p> </div> </div> | <ul style="list-style-type: none"> Apply foundational reinforcement if the wall surface is other than concrete. *Make sure that each mounting point can withstand a strength of 200 N (20 kgf or more)[fix 4 mounting points]. Failure to do so may result in fall. When mounting to drywall with self-tapping screws, reinforce the mounting points with light gauge steel (studs or cross-braces), or reinforcement plywood along with the screws. Failure to do so may result in fall. When mounting to a partition with self-tapping screws, insert snug-fitting wood reinforcement of at least 30 mm at the mounting points. Failure to do so may result in fall. <p>How to Mount onto a Wall</p> |

Types of Screws used for Wall-mounting

① to ③ indicate the types of wall surface below.

*Only self-tapping screws and washers are supplied with the product. Parts other than the supplied need to prepare before hand.

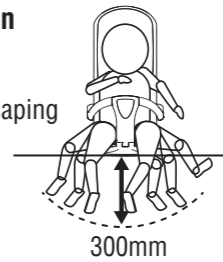
| | | |
|---|---|---|
| <p>① Partition/Plasterboard Installation</p> <ul style="list-style-type: none"> Self-tapping screws φ5 washers (supplied with Baby Keep FL) φ5x35 self-tapping screws (supplied with Baby Keep FL) <p>Partition Reinforcement Place a piece of wooden reinforcement at least 30mm in thickness inside the wall *Note that installing reinforcement wood is extremely important.</p> <p>Plasterboard Reinforcement Reinforce plasterboard with a light-weight steel frame, t12 plywood, or t2.3 iron plate.</p> | <p>② Concrete/ALC Installation</p> <ul style="list-style-type: none"> Female screw anchor bolts *Use ALC-specific anchors for ALC installation <p>Use M6, M8, or M10 types</p> <div style="border: 1px solid black; padding: 5px; margin-top: 10px;"> <p>⚠ CAUTION Do not use male screw anchor bolts, as it may not be possible to attach the head pad.</p> </div> | <p>③ Hollow Block Installation</p> <ul style="list-style-type: none"> Toggle bolts |
|---|---|---|

Installation Location (Installation Range)

To assist the child promptly, do not install the unit far from the caregiver.

• Height of Installation Location

Prevent from escaping

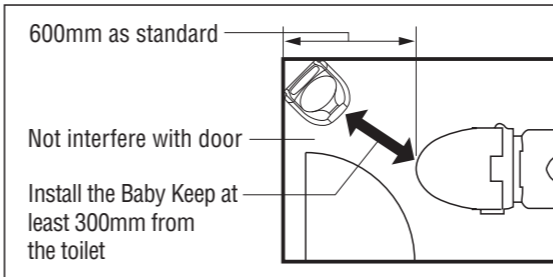


⚠ WARNING

Below the seating surface, as described in the diagram on the left, do not place handrails (including hinged one), trash can, or other objects. The child may stand up and escape and may fall.

⚠ WARNING

Install the unit where the caregiver can see the child.



• Install on a wall at least 600mm away from the toilet, or insure 300mm of space between the Baby Keep FL and toilet.

⚠ WARNING

If installing the Baby Keep FL in a private restroom, install the Baby Keep FL in a location where the child can be seen by the adult using the restroom at all times.

⚠ CAUTION

The Baby Keep FL should be installed clearly from door space. Otherwise it may cause damage.

Routine Safety Inspection

⚠ WARNING

Conduct the daily and annual safety inspections described below in order to safely use this product. Injury or serious accident could occur if safety inspections are not performed.

If a problem is found during the inspection, immediately stop using it, and contact your dealer or the service center below for assistance.

The daily or weekly inspection is a check using both eyes and hands. No tools are necessary.

| Baby Keep Slim FL | Baby Keep FL |
|---|--|
| <p>1. Physical Inspection</p> <ol style="list-style-type: none"> Check for loose parts Make sure the base does not wobble or shake, and that the guard is firmly in place Check for scratches or broken parts <p>2. Checking the Guard's Function</p> <ol style="list-style-type: none"> Insure that the guard is firmly in place, does not wobble or shake, and moves from left to right. After testing the opening and closing function of the guard several times, insure that neither the base nor the guard wobbles or shakes. <p>3. Sticker Check Stickers should be firmly adhered and legible. Check for scratches, rips, missing stickers, or fadedness.</p> <p>4. Head and Seat Pad Check Check for scratches and broken parts. Make sure the head and seat pads do not wobble or shake.</p> | <p>1. Physical Inspection</p> <ol style="list-style-type: none"> Check for loose parts Make sure the base does not wobble or shake, and that the guard is firmly in place Check for scratches or broken parts <p>2. Sticker Check Stickers should be firmly adhered and legible. Check for scratches, rips, missing stickers, or fadedness.</p> <p>3. Head and Seat Pad Check Check for scratches and broken parts. Make sure the head and seat pads do not wobble or shake.</p> |

For more information regarding the maintenance inspection (additional cost) and repair parts (sold separately).

- Main maintenance parts include pads and decals.
- Product durable period is 7 years. Repair Parts available with in 5 years after end of production.

Technical Specifications

| | | | |
|-----------------------|---------------------|------------------|--|
| Product Number | BC-F31 | Weight | 0.9kg |
| Product Name | Corner Mounting Kit | Materials | • BBase/Steel (Rust-proof) • Corner Cover/ABS Resin |
| Dimension | W205×D65×H213.5mm | | |

*Be advised that technical specifications for this product may change without notice for reasons such as improvement in design.

*For information on products, contact the distribution agency.

Manufacturer **Combi Corporation**
2-6-7, Motoasakusa, Taito-ku, Tokyo 111-0041 Japan

Distributor **CombiWith Corporation**
Head Office/2-6-7, Motoasakusa, Taito-ku, Tokyo 111-0041 Japan
TEL : 81-3-5828-7631 FAX : 81-3-5828-7630
www.combiwith.co.jp/

Corner Mounting Kit Hardware and Accessories

Baby Keep Corner Mounting Tools

Necessary Strength of Installation Fixtures

Install the Baby Keep in an area where reinforcement measures strong enough to support the following conditions. Failure to do so may result in fall.

Wall: 200N (20kgf) or more per place

| | | | | | |
|---------------------------|--|--|------------------------------|---------------------------------|-------------------------------------|
| 1 M6 Screws, 4 | 2 $\phi 6$ Flat washers, 2 big (diameter $\phi 20$), 2 small (diameter $\phi 12$) | 3 $\phi 4$ Self-tapping screws, 2 | 4 Corner cover, 1 | 5 Braille sticker, 1 | 6 Installation Manual, 3 |
|---------------------------|--|--|------------------------------|---------------------------------|-------------------------------------|

Corner Installation Instructions

* Illustrated below is the Baby Keep Slim FL. Follow the same instructions to install the Baby Keep Fit FL.
 * Hole positions are all center pitch (center-to-center) dimensions.

| | | | | |
|--|--|--|---|---|
| 1 Temporarily connect the four points between the corner fixtures and the Baby Keep. <p>Parts are included 2</p> <p>Parts are included 1</p> <p>Parts are included 2</p> <p>Corner Mounting Kit</p> | 2 Temporarily place the connected corner fixtures and base in the corner against the wall, and mark the installation points on the wall. <p>Mark Installation points</p> | 3 Fix the corner fixtures to the wall at four mounting points. <p>Small holes, 135mm Large holes, 115mm</p> <p>130mm</p> <p>940mm</p> <p>*Refer to "Types of Screws Used for Wall-mounting" on the other side of this instructions. Illustration below shows the Baby Keep. Use of washers and self-tapping screws supplied with 2 3</p> <p>Large holes</p> <p>Small holes</p> <p>Included 2 3 $\phi 5$ Self-tapping screws and Washers</p> <p>*Once the screws are in place, make sure the structure does not shake or wobble.</p> | 4 After temporarily placing the base onto the corner fixture, remove the lower panel and mark the underside of the base. <p>Lower panel</p> <p>Mark 3 installation points</p> | 5 Temporarily remove the base, and install 3 anchor bolts in the marked areas. <p>3 x M10 anchor bolts. *Anchor bolts must be placed at least 40mm into the base</p> <p>Do not use the central hole</p> <div style="border: 1px solid black; padding: 5px;"> <p>CAUTION</p> <p>If there is decoration lower panel at wall and when mounting to a wall, affix the entire upper portion with plywood. If the Baby Keep Slim FL is not properly installed, damage may occur.</p> </div> <div style="border: 1px solid black; padding: 5px;"> <p>Holes as seen from above</p> </div> |
|--|--|--|---|---|

| | | | | |
|---|--|--|---|--|
| 6 Install the corner cover from the backside. <p>Part is included 4</p> <p>Parts are included 3</p> | 7 Return the base to its original location as indicated above, and fix the Baby Keep FL to the floor at three mounting points. <p>Base</p> <p>Nuts M6 Spring washers Washers</p> <p>anchor bolts</p> <p>$\phi 10$ Washers, 1-3 (supplied with Baby Keep)</p> <div style="border: 1px solid black; padding: 5px;"> <p>Side View</p> <p>Do not leave empty space on the wall</p> </div> <p>In order to stabilize the base, take the slope of the floor into account and use the washers accordingly.</p> | 8 Once the corner fixture is mounted onto the wall, connect the base. <p>Parts are included 2</p> <p>Parts are included 1</p> <p>Parts are included 2</p> | 9 Attach the head pad. (Make sure the correct side is up.) <p>Head pad (supplied with Baby Keep)</p> <p>Back side</p> <p>Square holes</p> <p>*The up arrow on the back indicates which side is up. Match the 6 tabs with the corresponding square holes on the backside to attach the head pad.</p> <div style="border: 1px solid black; padding: 5px;"> <p>CAUTION</p> <p>The head pad tabs will make a clicking sound when correctly attached. Note that the tabs may break if forcibly inserted.</p> </div> <p>Screws, 2</p> <p>Screw caps, 2 (supplied with Baby Keep)</p> | 10 The stickers other than Corner sticker are come with the product. <p>Guide stickers, 2</p> <p>Usage instructions stickers</p> <p>Corner sticker</p> <p>Baile sticker</p> <p>Routine inspection sticker</p> <p>Restroom entrance</p> <p>Restroom stall</p> <div style="border: 1px solid black; padding: 5px;"> <p>WARNING</p> <ul style="list-style-type: none"> Stickers must be placed in highly visible areas. Dangerous actions such as indicated on the usage instructions sticker may lead to injury or serious accidents. Thoroughly check the Baby Keep FL once it has been installed. Refer to the Users Manual "Maintenance Inspection" section. Using the Baby Keep FL without completely assembling it can lead to injury or serious accidents. </div> |
|---|--|--|---|--|